



ASUW SHELL HOUSE RENOVATION

UNIVERSITY of
WASHINGTON

About the Project

The ASUW Shell House is undergoing a historic renovation to create a modern community space while restoring the vibrant history of the structure.

This 100+ year old building will undergo structural and aesthetic upgrades, window replacement and refurbishment, new feature stairs and elevator, landscaping improvements, and upgraded electrical, mechanical, and plumbing systems.



[Click or scan for more information](#)

Project Contacts

Carmen Scrapper
Project Manager
cscraper@uw.edu
206-833-6989

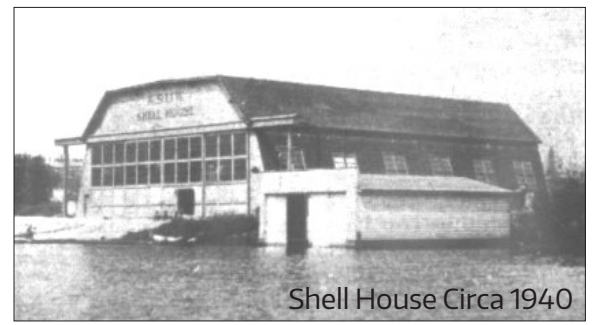
Bob Dillon
UW Construction Manager
bdillon@uw.edu
206-685-6745

KEY UPCOMING EVENTS:

1. The Ship Canal Trail will continue to be closed off to the public through September, opening back up in October 2026.
2. Interior wall assembly work will continue throughout June.
3. Exterior roofing and siding activities will begin and progress throughout the month.
4. Mechanical, electrical, fire sprinkler, and plumbing rough-in work will continue within the building. Work on the mechanical room will also advance, including the delivery and installation of equipment.
5. Exterior utility installation will continue, and site concrete work will commence. The sewer connection to the existing utility services along the WAC building will be completed during the month.
6. The building will continue to produce historic salvage material, being stored for reuse at the end of the project.



Re-imagined Interior Space



Shell House Circa 1940



