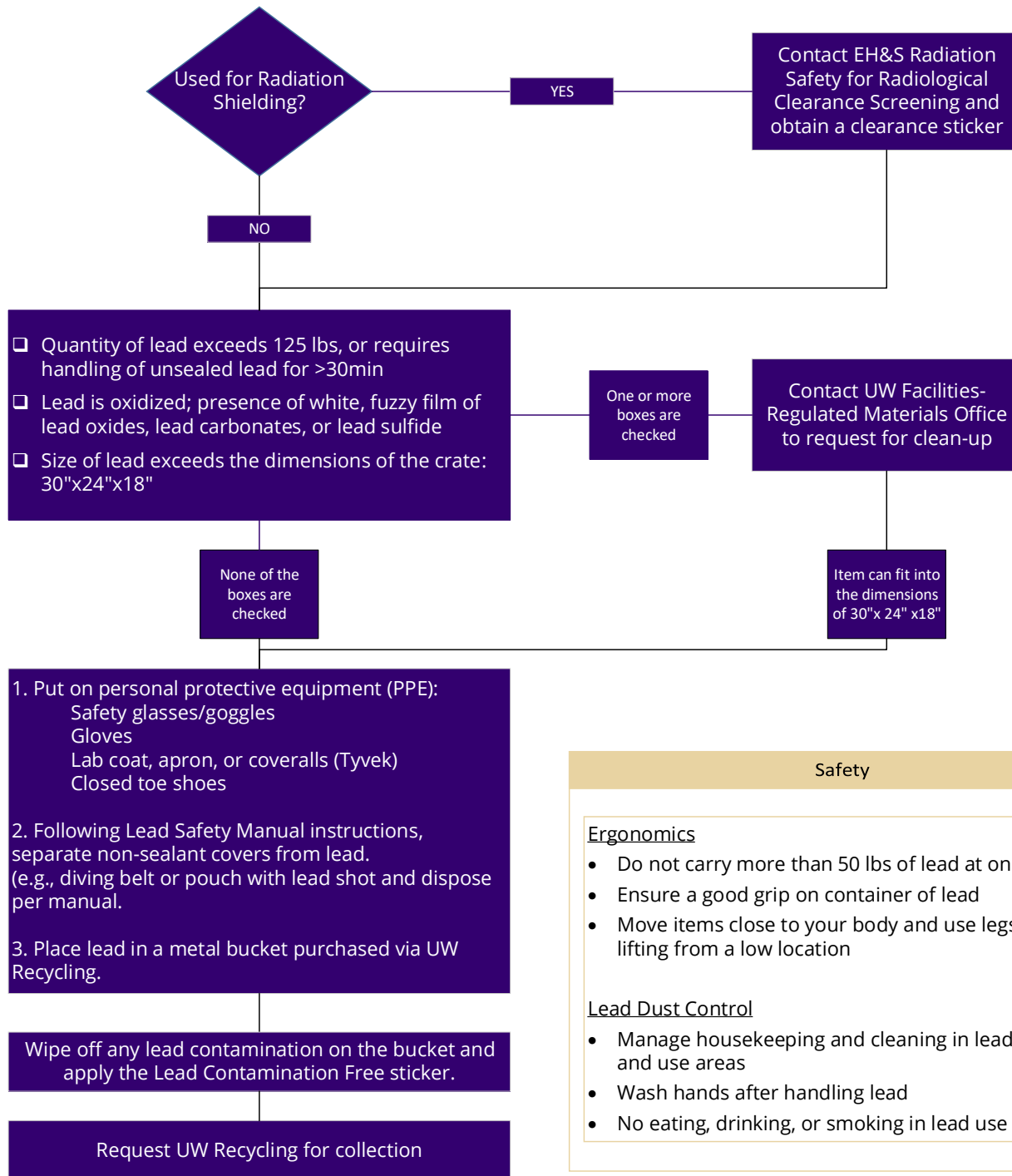


Lead Recycling: Packaging for Collection



Safety

Ergonomics

- Do not carry more than 50 lbs of lead at once
- Ensure a good grip on container of lead
- Move items close to your body and use legs when lifting from a low location

Lead Dust Control

- Manage housekeeping and cleaning in lead storage and use areas
- Wash hands after handling lead
- No eating, drinking, or smoking in lead use areas

Contact Information

EH&S Radiation Safety
radsaf@uw.edu
(206) 543-0463

UW Facilities- Regulated Materials Office
asbestos@uw.edu
206-685-3357

EH&S Occupational Safety & Health
(re: respirators, metal container, and cleaning methods)
ehsdept@uw.edu
(206) 543-7262

UW Recycling
recycle@uw.edu
206-685-2811