

# Anderson Hall Renovation

---

UNIVERSITY OF WASHINGTON | UWAC

Hennebery Eddy

LEASE CRUTCHER  
**Lewis**

SiteWorkshop  
LANDSCAPE ARCHITECTURE

06 May 2024

**W** UNIVERSITY *of* WASHINGTON

## **UW - PROJECT DELIVERY GROUP:**

Jeannie Natta, Director

Lara Sirois, Project Manager

## **DESIGN-BUILD TEAM:**

Duncan Howard, Lease Crutcher Lewis

Will Ives, Hennebery Eddy Architects

Pearl Kang, Hennebery Eddy Architects

Vinita Sidhu, SiteWorkshop

Sarah Canepa, SiteWorkshop

Introductions / Recap	11:00 to 11:05 am
Site & Building Exterior	11:05 to 11:25 am
Interior Spaces	11:25 to 11:45 am
Q+A	11:45 to 12:00 pm

# Project Overview

The Anderson Hall Renovation will celebrate the building's historic significance while embodying the collaborative and innovative spirit of the School of Environmental and Forest Sciences. This will be achieved by maximizing programmatic improvements within the limitations of the available budget, balancing program and infrastructure needs (including accessibility upgrades and targeted seismic and system upgrades as able).

1. To provide welcoming and inclusive spaces enabling the brightest minds in science to work across disciplinary boundaries
2. To modernize classroom and office space, supporting impactful research cultivating a sense of community
3. To create flexible learning environments that promote innovation, engineering, and analysis in support of forest-dependent industries and culturally significant uses by Western and Indigenous population
4. To respectfully, thoughtfully, and strategically renovate this historic building
5. To strategically reinvigorate the plaza between Anderson Hall, Winkenwerder Hall & Bloedel Hall

Design-Build Contract:	\$31.5 million
Total Project Budget:	\$40.8 million
Project Definition:	June 2023 to December 2023
Design/Preconstruction:	October 2023 to June 2024
Construction:	June 2024 to December 2025
Occupancy:	December 2025

- Permit Submissions (SDCI)
- Landmarks Approval (DON)
- GMP

- Consider creating visual connections from the north building entry to the new south building entry and review the entry sequence for building users who enter through the north building entry and how they might make their way to the south building entry. Important that there is a clear route to new south entry from Steven's Way and there is a sectional connection between the two entries.
- Consider activation around the historic north building entry to foreshadow activity in the SEFS Courtyard and present as a gateway to SEFS (example might be small seating area/benches)
- Student feedback reiterating need for lighting at pathways and improvements to make site feel welcoming
- Consider maintenance and succession plans in the planting design
- Burke Museum native meadow mentioned as an example on campus. Potential to collaborate with Landscape Architecture department at UW, as well as SEFS
- Importance of thoughtful approach to lighting that celebrates the historic architecture and does not distract or take away from it
- Consider prioritizing the two historic assembly spaces as they are complete spaces with historic significance compared to the stairs which are more elements with historic significance



# Conceptual Framework



**OLD GROWTH**



**SECONDARY FOREST**

HISTORIC SPACES

RENOVATED SPACES

PRESERVATION & PARTIAL RESTORATION

PRESERVATION & PARTIAL RENOVATION

NEW & COMPLEMENTARY TO HISTORIC

NEW & DIFFERENTIATED



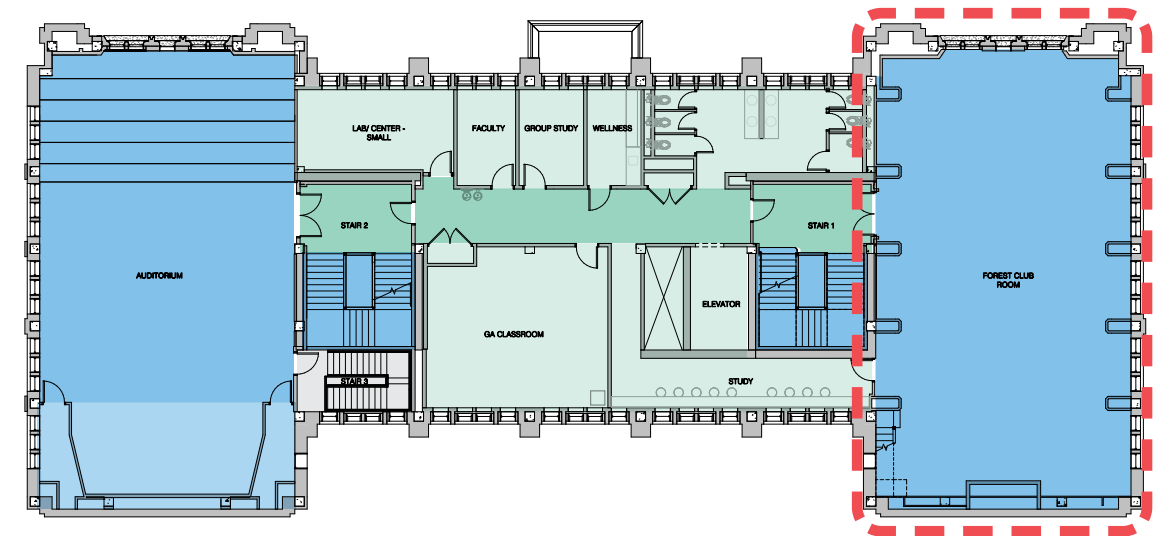
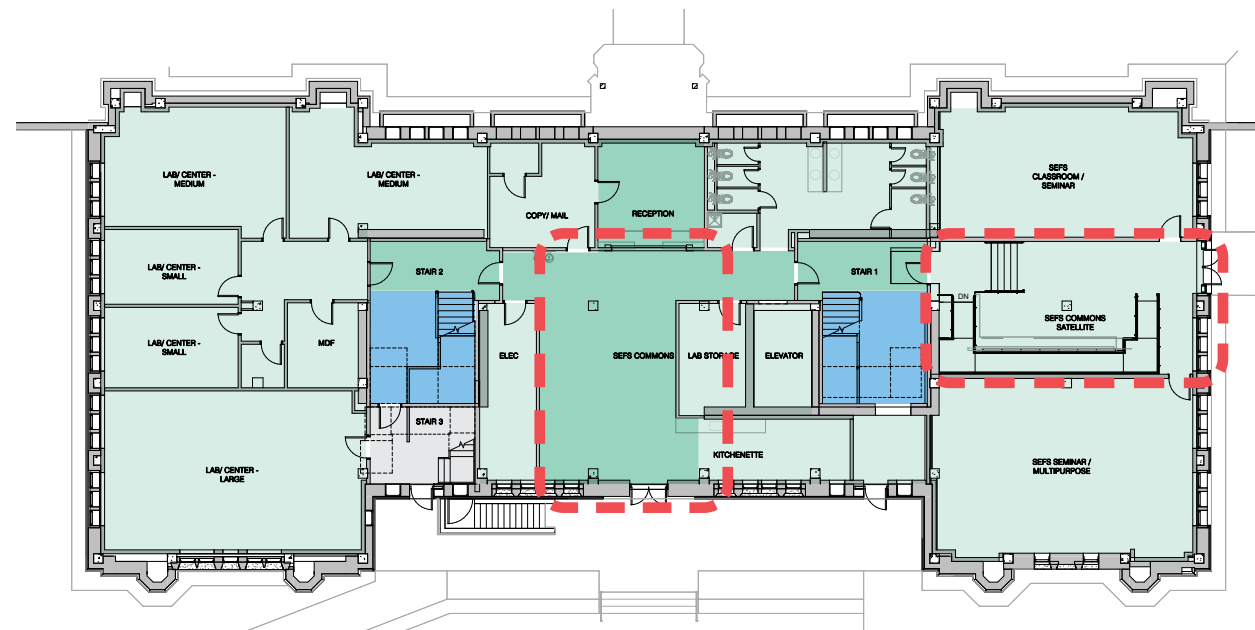
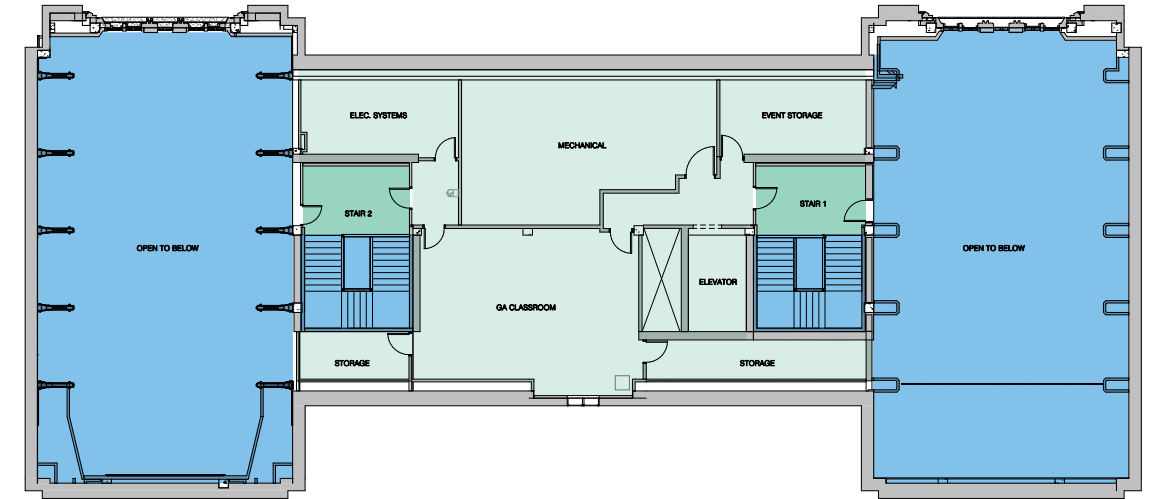
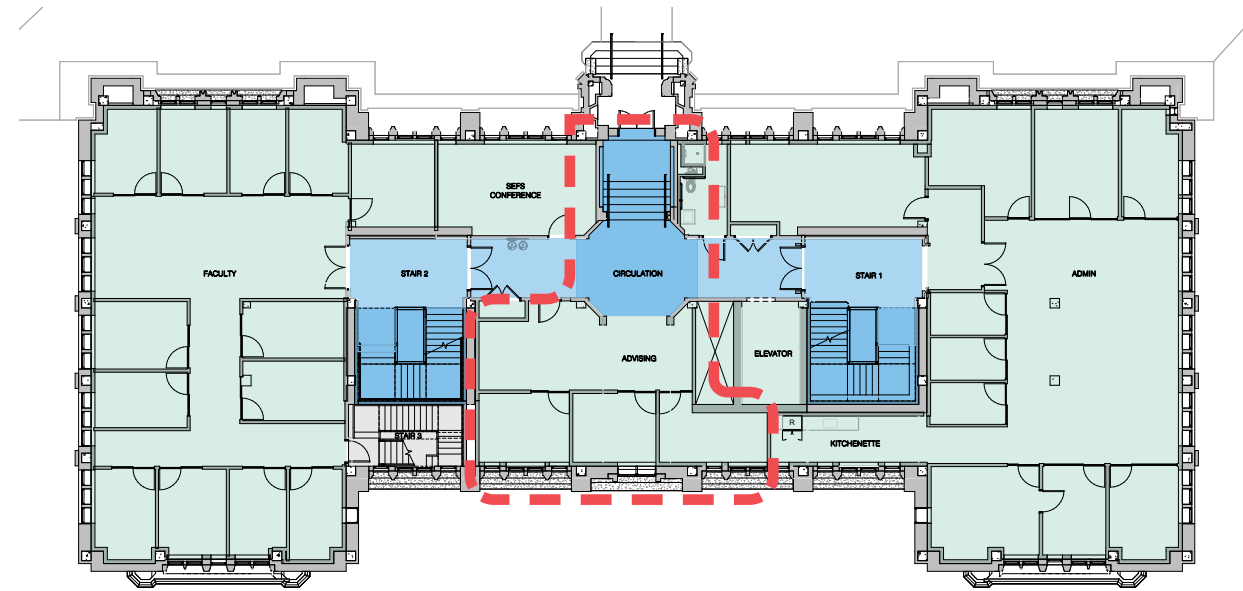
## LEGEND:

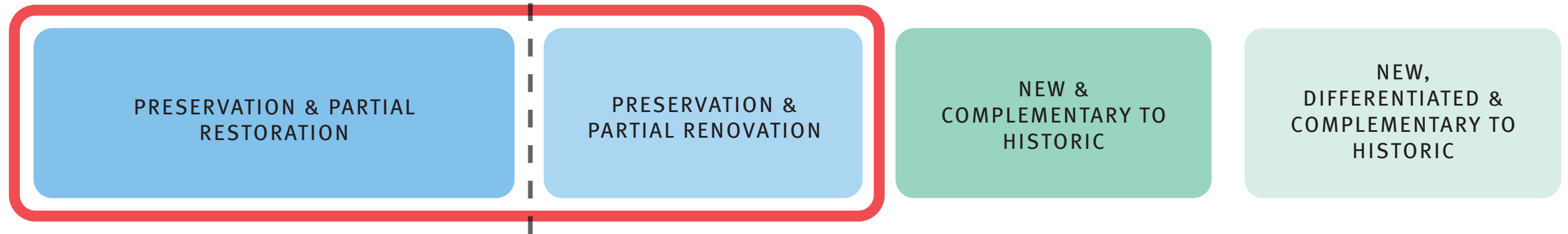
PRESERVATION

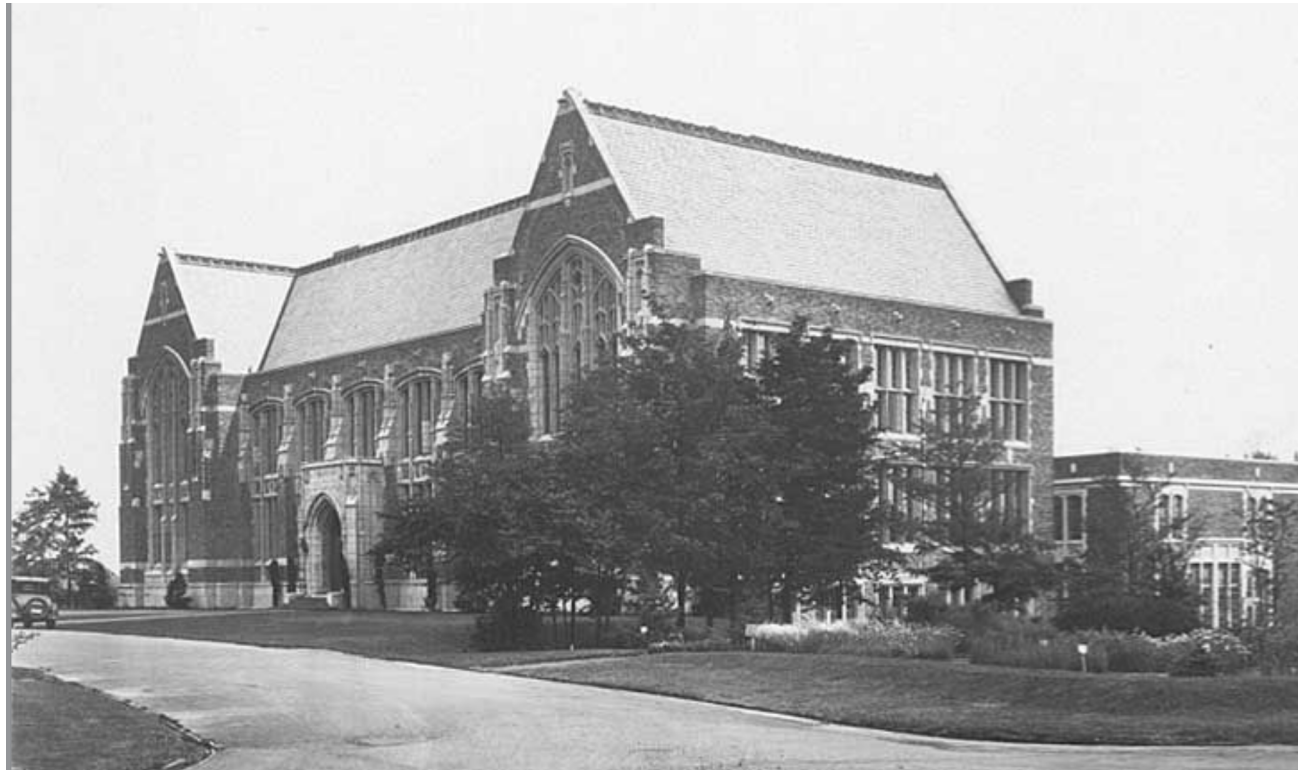
PRESERVATION & PARTIAL RENOVATION

NEW & COMPLEMENTARY TO HISTORIC

NEW & DIFFERENTIATED







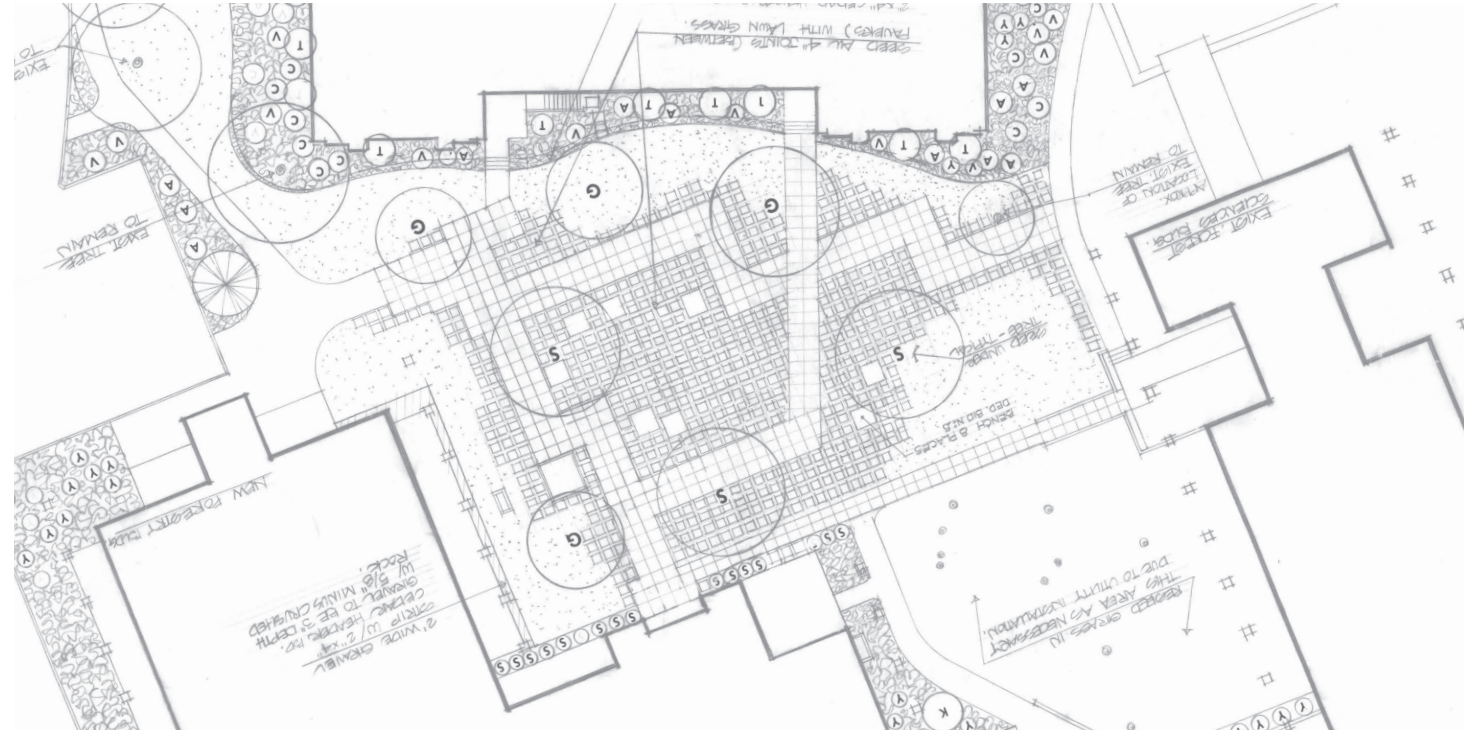
PRESERVATION / RESTORATION



PRESERVATION/PARTIAL RENOVATION

## Historic Character Defining Features

- Orthogonal orientation aligned to Bloedel & Winkenwerder Halls
- Square concrete exposed aggregate pavement
- Wooden site furnishings aligned to courtyard grid
- Modern globe light fixtures (do not meet UW standard fixture or dark sky requirements)



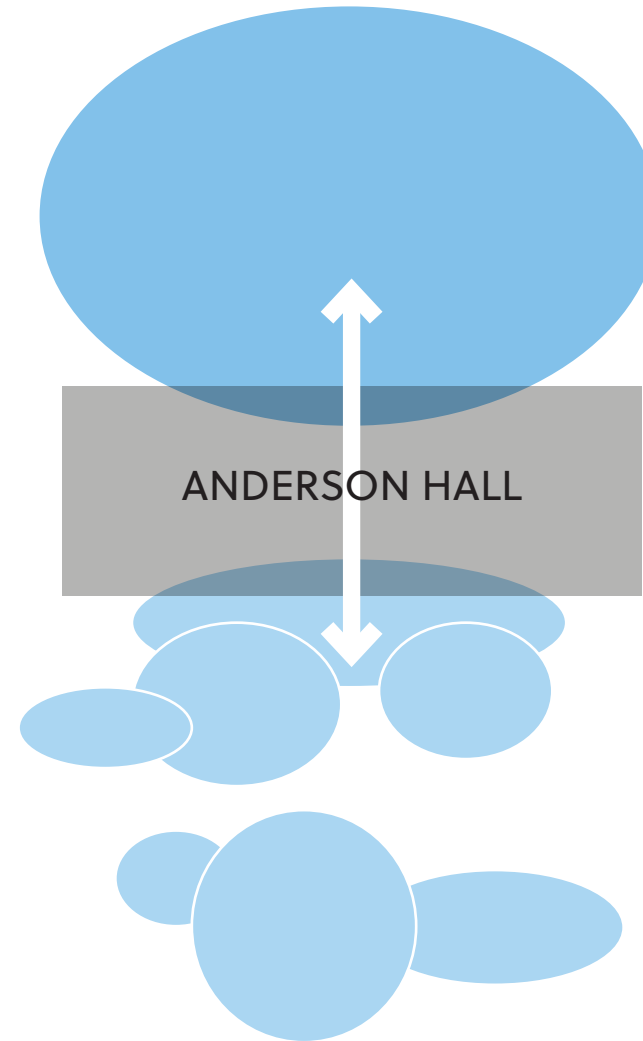
PRESERVATION & PARTIAL RESTORATION

PRESERVATION & PARTIAL RENOVATION

SINGULAR/  
SIMPLE



DIVERSE/  
COMPLEX

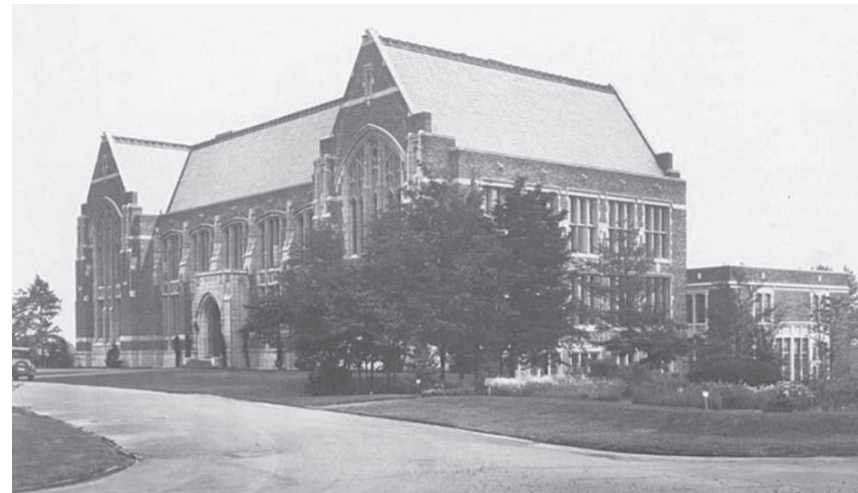


Spatial experience in the north site is focused on open/grand views of the historic facade and circulation.



Spatial experience in the south site is more varied and flexible. The mingling and intersections between architectural eras creates a richer ecosystem of spaces.





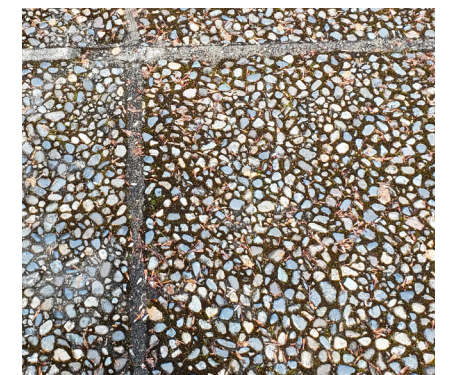
**HISTORIC / EXISTING FEATURES**



**PRESERVED / RESTORED FEATURES**  
SINGULAR / SIMPLE / GRAND / PRESERVED / SYMMETRY

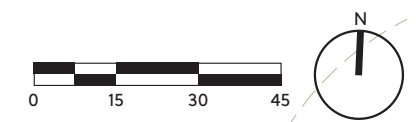
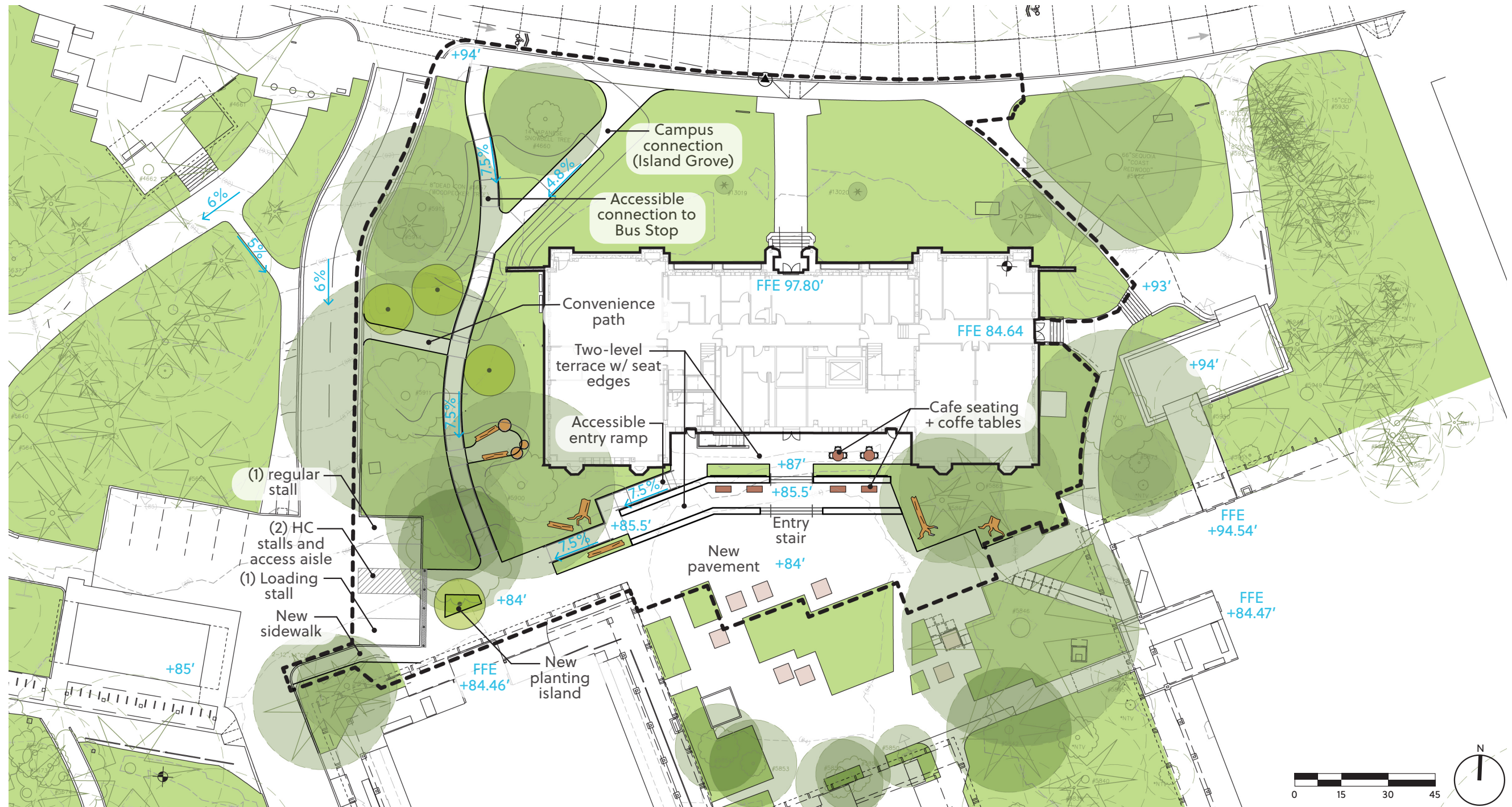


**HISTORIC / EXISTING FEATURES**



**PRESERVED / RENOVATED FEATURES**  
**DIVERSE / MULTI-FACETED / OVERLAPPING**  
**ASYMMETRY + VARIETY OF SCALE**

# PREVIOUS SITE CONCEPT - SITE PLAN





## Lighting Considerations

- Exterior and site lighting to address code requirements and safety concerns
- Dark sky compliant
- Reduce the types of light poles used in this area of campus and utilize the UW standard light pole
- Refurbish historic exterior light fixtures at north building entry



Context materiality  
Anderson Hall



Concrete pavement  
Sandblast finish w/ sawcut joints



Rockery walls



Salvaged log features



Context materiality  
South courtyard



Concrete pavement  
Light exposed aggregate finish w/  
sawcut joints



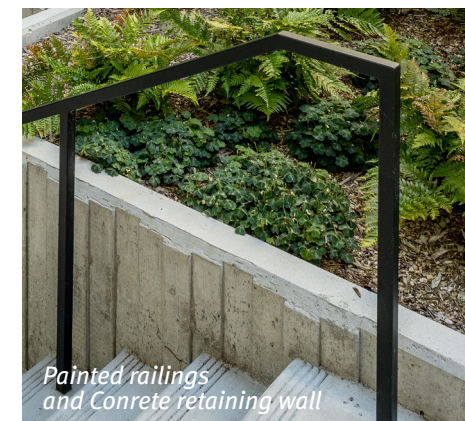
Precast stair treads



Basalt features



Concrete retaining wall  
Vertical board form finish



Painted railings  
and Concrete retaining wall

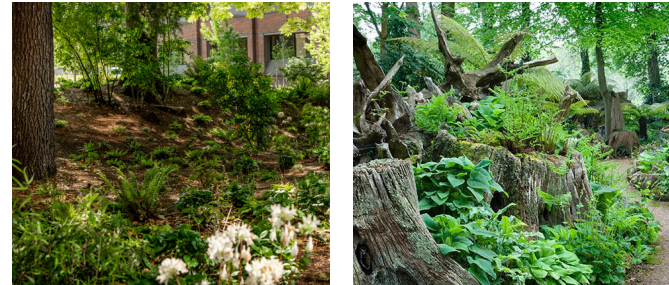


Cafe tables and chairs

# CURRENT SITE CONCEPT - PLANTING



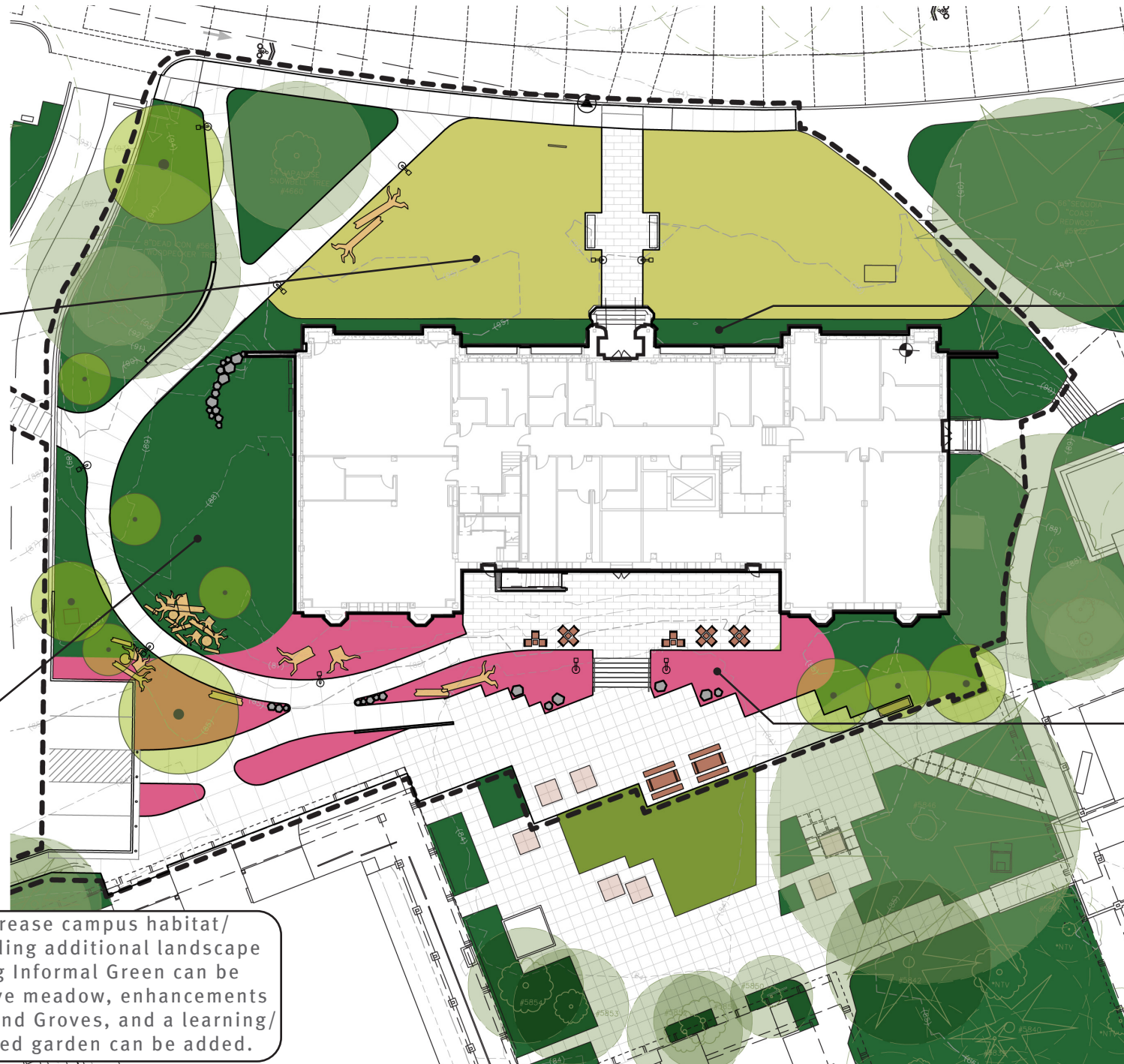
**NORTH MEADOW**  
Native meadow plants that demonstrate early forest succession and provide habitat and host plants for native species.



**WEST + EAST WOODLAND/FOREST FLOOR**  
Native/adapted forest understory and mid-story plants and small trees.



Project goal to increase campus habitat/biodiversity by providing additional landscape typologies. Existing Informal Green can be transformed into native meadow, enhancements can be made to Woodland Groves, and a learning/demonstration focused garden can be added.



**NORTH UNDERSTORY FOUNDATION**  
Evergreen forest understory groundcovers and low shrubs that ground the building.



**SOUTH COURT GARDEN**  
Drought tolerant/climate resilient plants, with opportunity for planting that demonstrates topics of interest to SEFS.

# CURRENT SITE CONCEPT - PLANTING



NORTH MEADOW



NORTH UNDERSTORY FOUNDATION



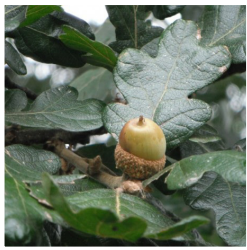
WEST + EAST WOODLAND/FOREST FLOOR



SOUTH COURT GARDEN

# CURRENT SITE CONCEPT - PROPOSED TREES

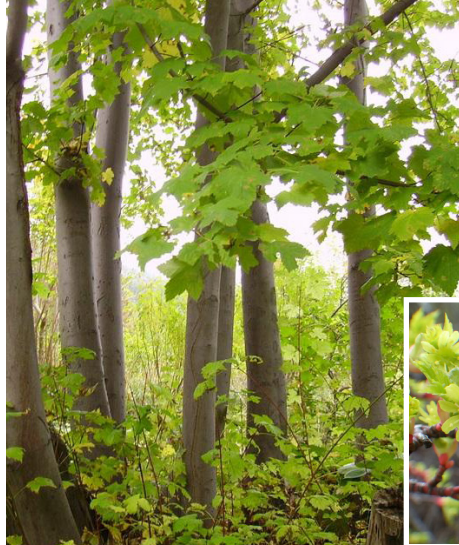
*Quercus garryana* - Oregon White Oak



*Quercus chrysolepis* - Canyon Live Oak



*Acer glabrum* var. *douglasii* - Douglas Maple

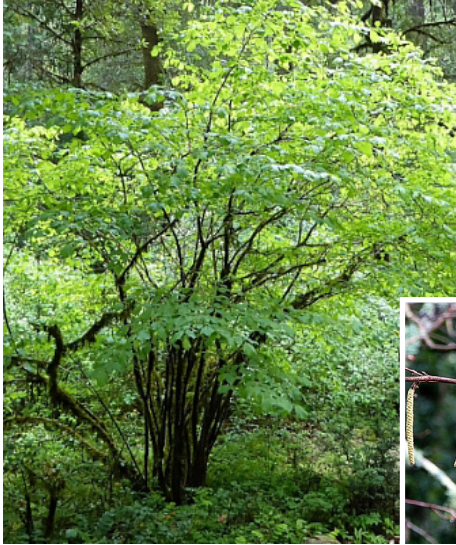


*Amelanchier x grandiflora* 'Autumn Brilliance' - Serviceberry\*



\*memorial tree

*Corylus cornuta* var. *californica* - Beaked Hazelnut



*Notholithocarpus densiflorus* - Tanoak







*North Entry, c. no date*







*South Entry & Arcade, c. 1940-1950*

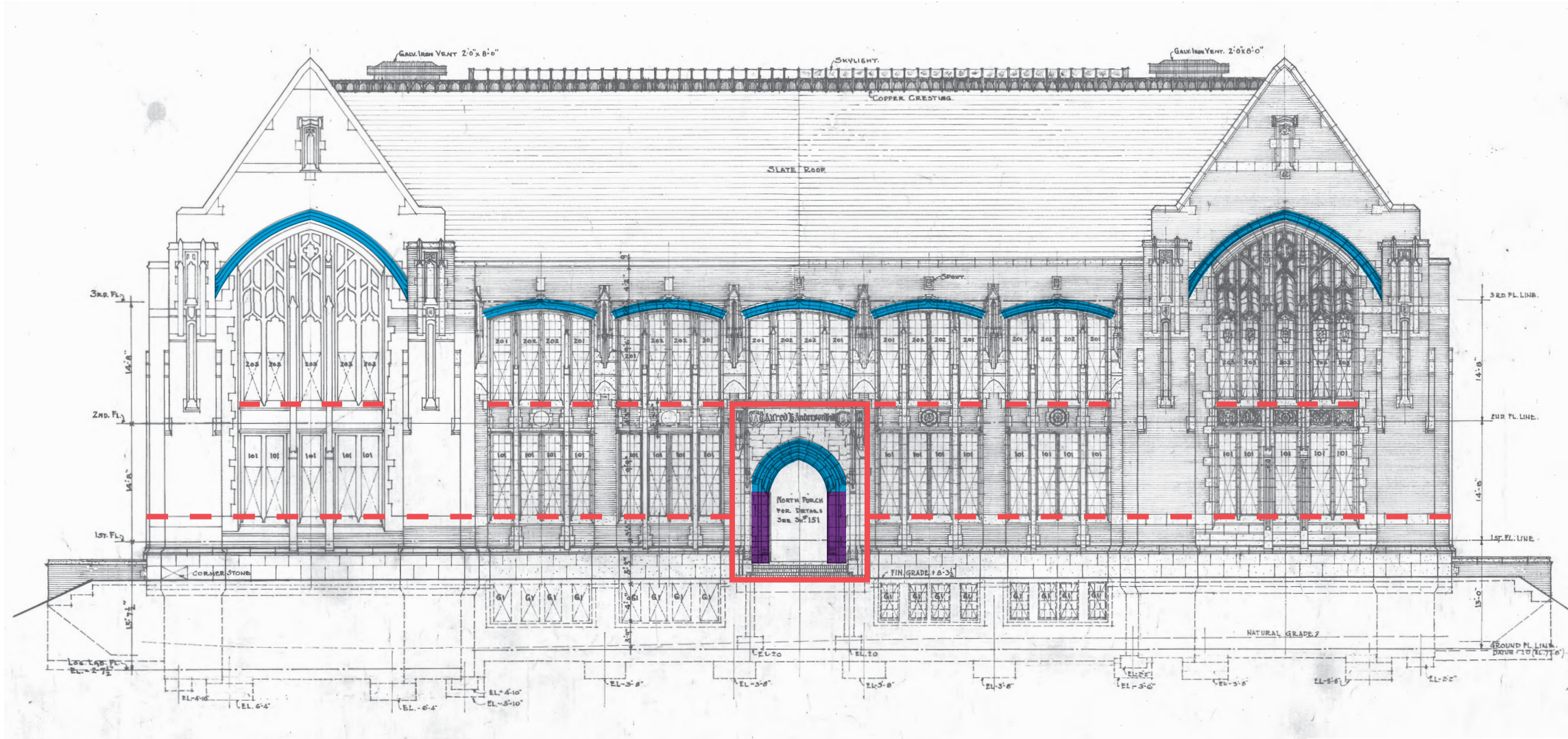


*Existing condition of 1970's Infill after removal of arcade*

# EXISTING NORTH ENTRY & ELEVATION





DIAGRAM LEGEND

-  POINTED ARCH OR SHALLOW ARCH INTERRUPTED BY VERTICAL ELEMENT
-  HORIZONTAL DATUM
-  EXPRESSED ENTRY VESTIBULE
-  VERTICAL EXTENSION OF ARCH AT ENTRY



# PROPOSED SOUTH ENTRY & ELEVATION

## DIAGRAM LEGEND

-  POINTED ARCH OR SHALLOW ARCH INTERRUPTED BY VERTICAL ELEMENT
-  HORIZONTAL DATUM
-  EXPRESSED ENTRY VESTIBULE
-  VERTICAL EXTENSION OF ARCH AT ENTRY



PROPOSED SOUTH ENTRY

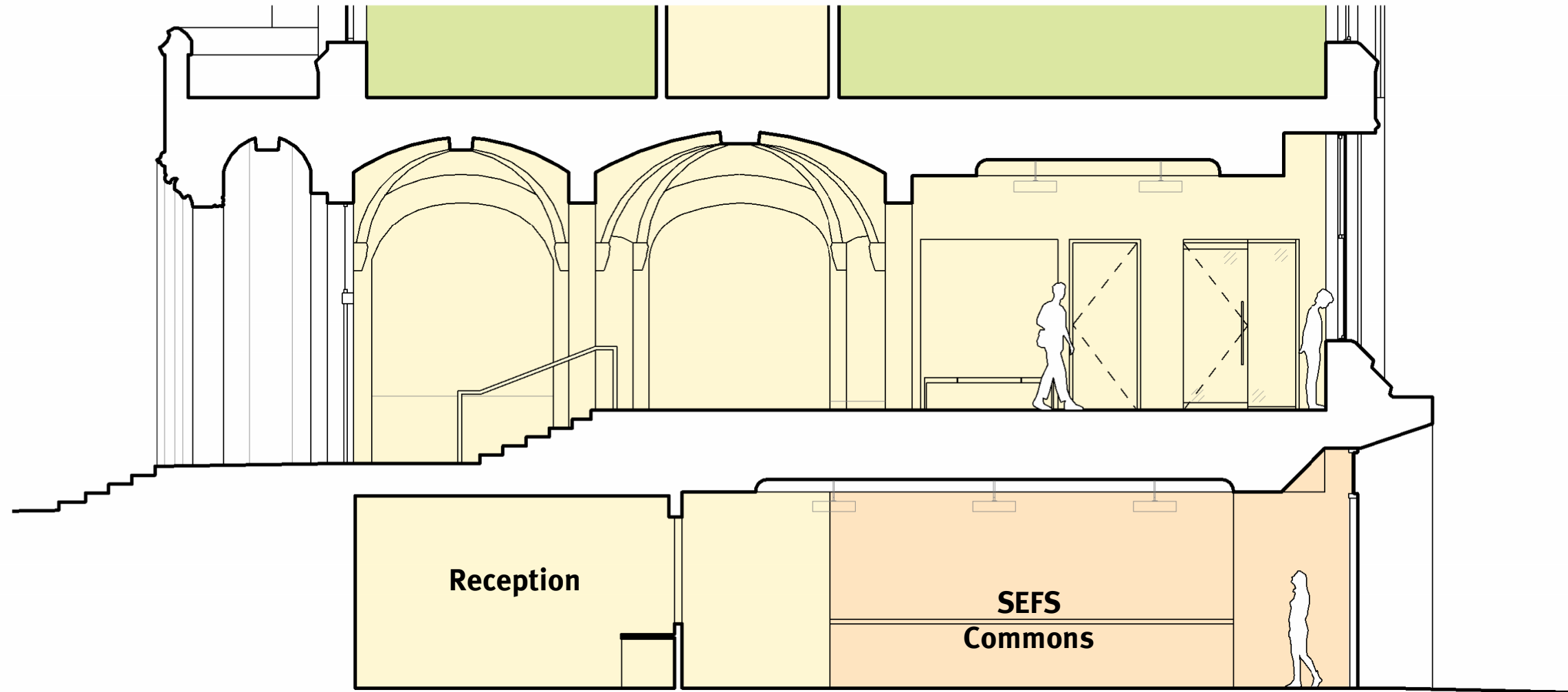


PROPOSED SOUTH ENTRY





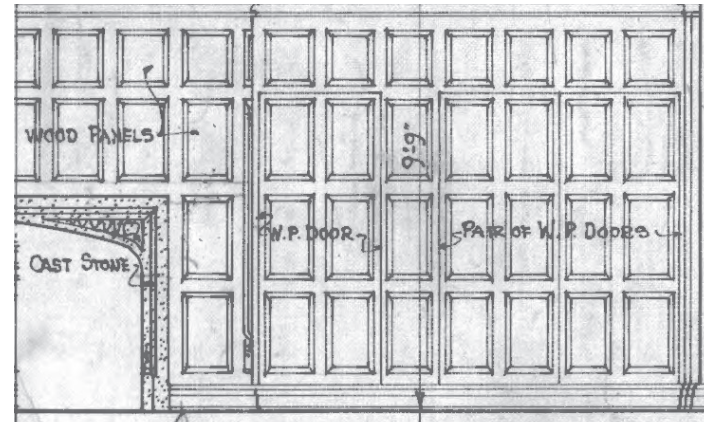








# SEFS COMMONS - WOOD PANEL FEATURE WALL



*Forest Club Room wall panels*

*Wood Species present within the UW Pack Forest*

SEFS COMMONS - DISPLAY CASE



University of Oregon, Chapman Hall



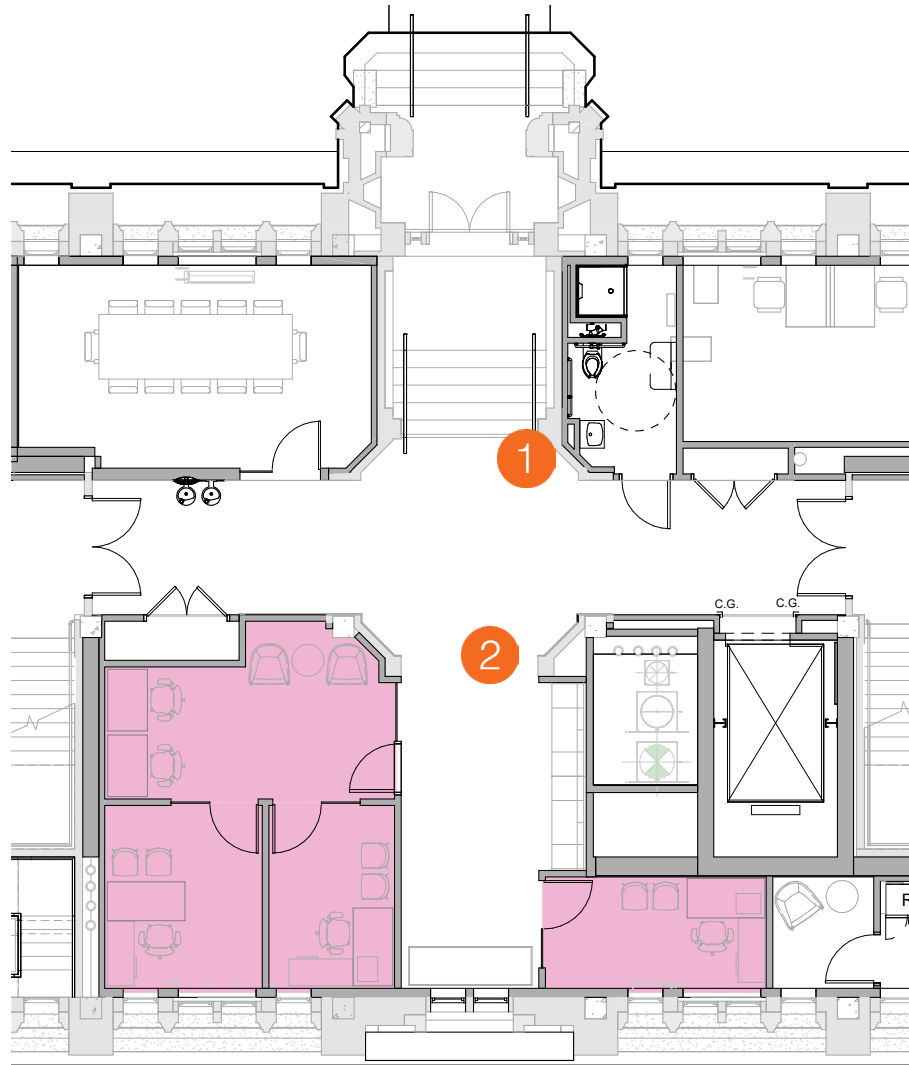
Historic display case



Robert M. Richmond Memorial Library & Museum







View 1, Historic Entry Foyer looking south

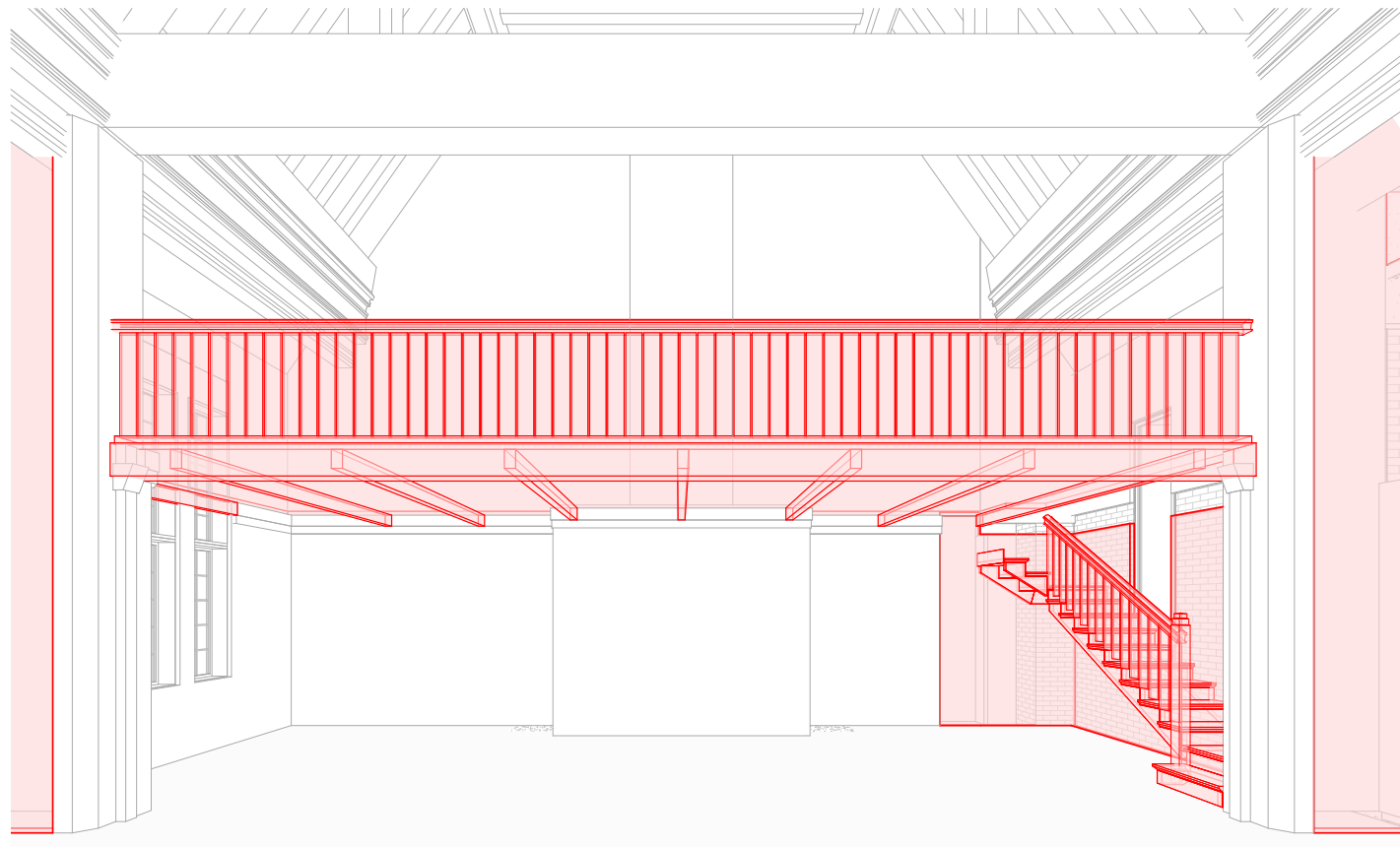


View 2, Advising Suite Entry looking south

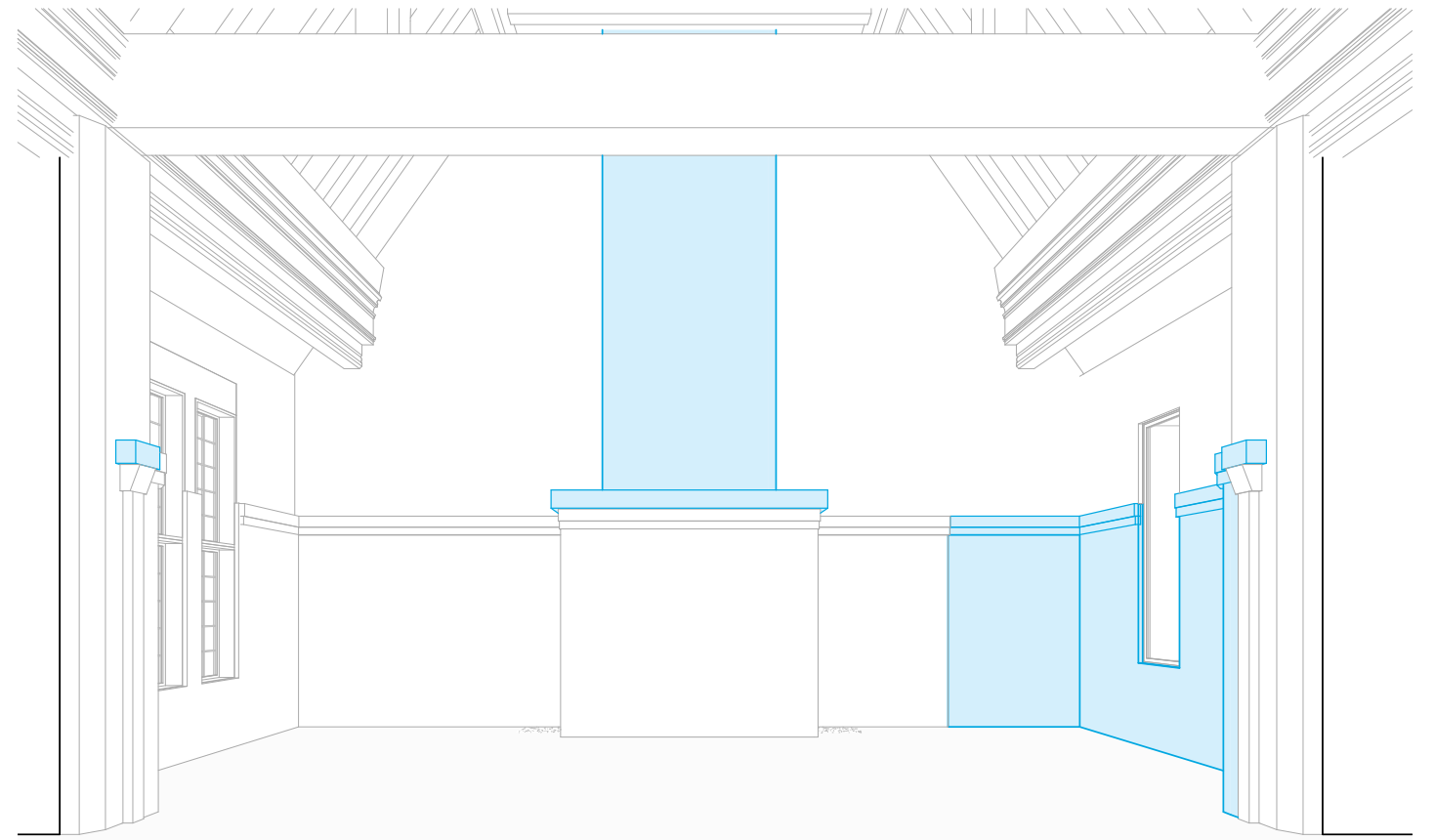






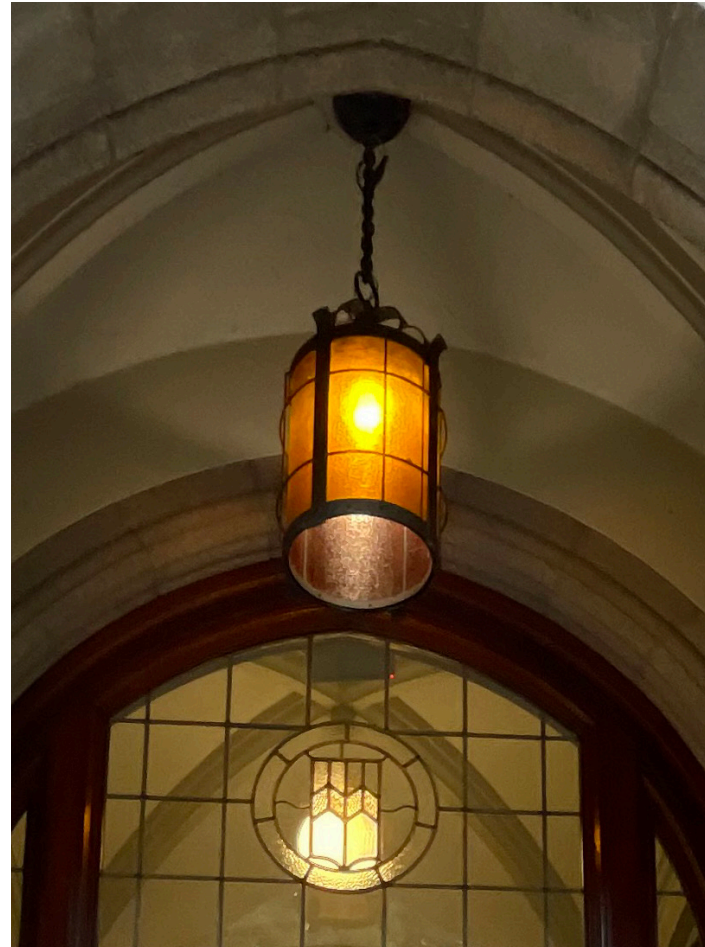


*Proposed removal of historic mezzanine*



*Proposed modifications with removal of historic mezzanine*





*Historic Light Fixture at Entry*



*Original Light Fixture at Auditorium*

Further development of site planting and details

Development of other interior historic spaces (Auditorium & Stairs)

Development of other public spaces (SEFS Commons Satellite/East Entry)

Further discussions with DON

Q & A

END