



INTERCOLLEGIATE ATHLETICS BASKETBALL TRAINING FACILITY

PROJECT CONTACTS

Carmen Scrapper
Project Manager
Project Delivery Group
cscraper@uw.edu | 206.833.6989

UNIVERSITY of
WASHINGTON

Bob Dillon
Construction Project Manager
Project Delivery Group
bdillon@uw.edu | 206.423.5155

UNIVERSITY of
WASHINGTON

ABOUT THE PROJECT

- 36,000 sf (new facility) + 4,000 sf (interior renovation) = 40,000 sf total project
- 2 stories in height (approximately 40')
- Supports Men's and Women's Basketball programs
- Direct Connections to Hec Ed and Graves Annex for all athletes



[CLICK OR SCAN TO LEARN MORE](#)

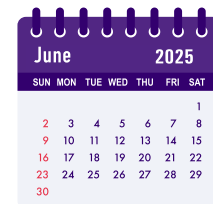
SUMMARY OF UPCOMING ACTIVITIES (June 15 - July 31 2025)

The construction of the exterior of the building is mostly complete, with the interior of the building continuing to be built out. In the courts, the flooring install has started with the game line painting of the first court starting this week. Additionally, Level 1 and Level 2 will have all their walls covered by the end of this month. In addition to work happening on the inside, work is also starting to move forward with the sitework on the south side of the project starting on 6/16, then flowing to the East side in July and August. This work will affect the access from the Montlake gate. You can also expect to see changes in the project site fencing and logistics. See below for more information.

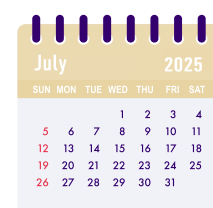
IMPACT BULLETIN

IMPACT TYPE	INFORMATION	IMPACT DATES
NOISE	<ul style="list-style-type: none"> • Vector Trucks 	<ul style="list-style-type: none"> • April 15 - July 15
CLOSURES/ TRANSPORT	<ul style="list-style-type: none"> • Pedestrian walk/bike path re-routed by Nordstrom • Access from Montlake to Softball closed • Access to Nordstrom tennis re-routed to South 	<p><i>Approximate dates</i></p> <ul style="list-style-type: none"> • Mar 1 2024 - Aug 2025 • June 23 - July 30 • June 24 - Aug 29

UPCOMING MILESTONES



- June 6: Level 2 Walls Closed up
- June 16: South Site Excavation Starts
- July 30: Rough grade at East Starts

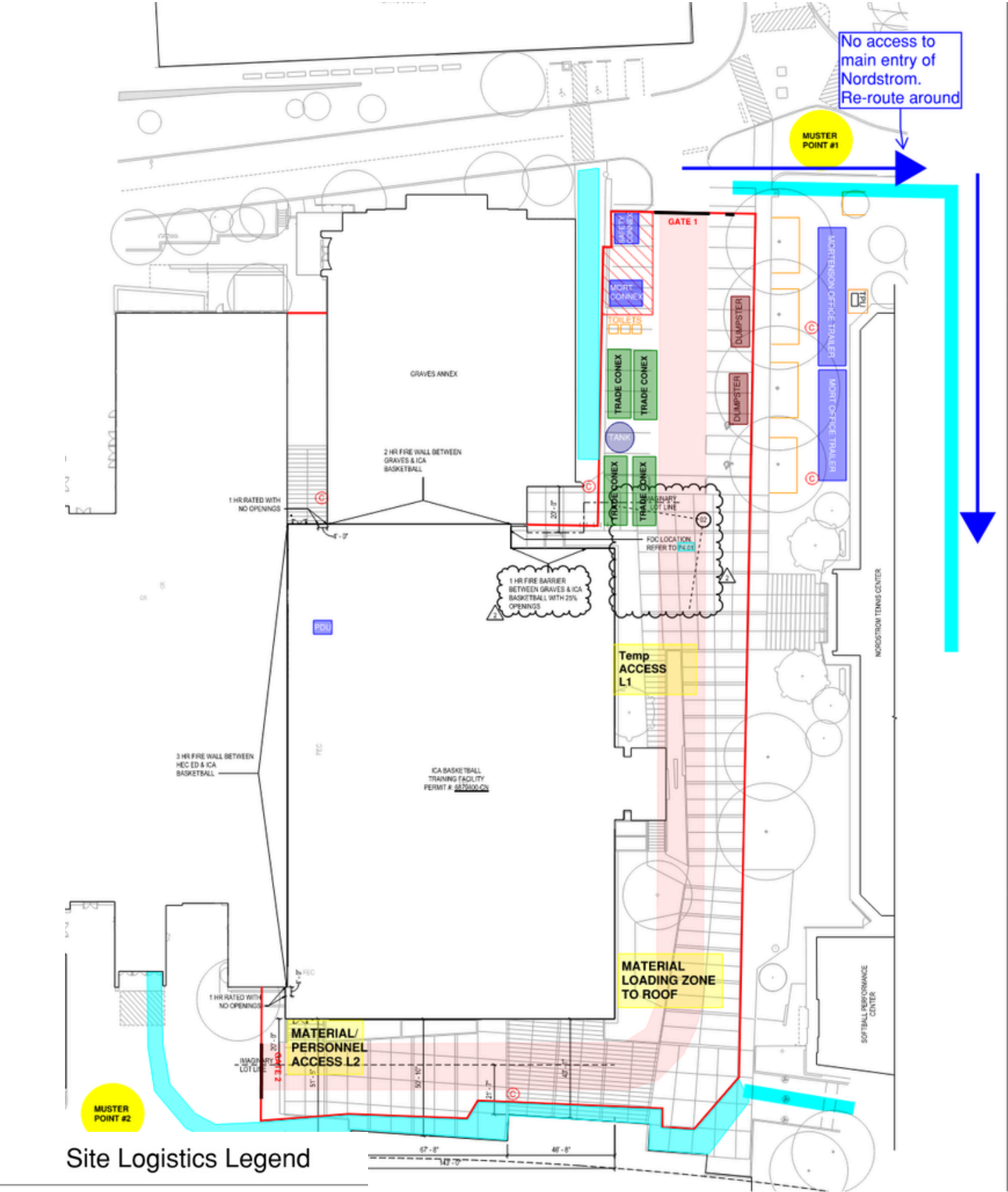


- July 16: AV System in Courts install starts

COURT A RENDERING



SITE LOGISTICS



Site Logistics Legend

- | | |
|--|-----------------------------|
| | Existing Building Footprint |
| | Pedestrian Walk Path |
| | Bike Path |
| | Fire Lane |
| | Site Fence |
| | Office Trailers |