

February 2023

# CONSTRUCTION BULLETIN

## UW Medicine Behavioral Health Teaching Facility

1550 N 115th St. Seattle, WA 98133



The purpose of this bulletin is to inform staff, patients, visitors and the neighbors close to the University of Washington Medical Center Northwest campus about the Behavioral Health Teaching Facility (BHTF) construction project. This bulletin will be published quarterly during the design phase and monthly during the construction phase. Please see the webpage for more information about the project, construction logistics and the milestone schedule. <https://facilities.uw.edu/projects/behavioral-health-teaching-facility>

### CONTACT LIST

#### Construction Contacts

Jeannie Natta  
Project Manager, Project Delivery Group, UW Facilities  
[jnatta@uw.edu](mailto:jnatta@uw.edu) | (206) 724-5304

Jon Ericson  
Construction Manager, Project Delivery Group, UW Facilities  
[jerics@uw.edu](mailto:jerics@uw.edu) | (206) 999-0367

Cole Weyenberg  
Superintendent, Clark Construction  
[Cole.Weyenberg@clarkconstruction.com](mailto:Cole.Weyenberg@clarkconstruction.com) | (206) 613-9167

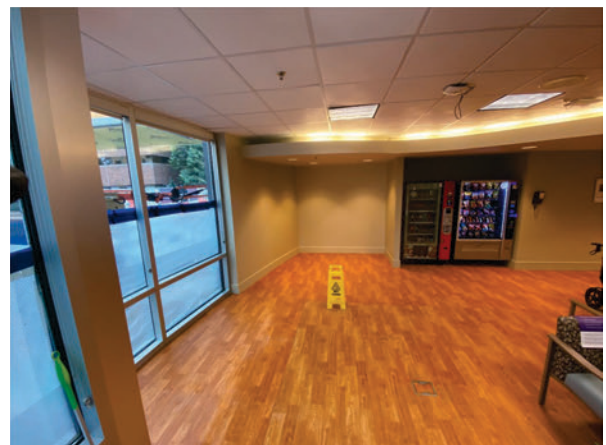
#### UW Medical Center Community Liaison

Pam Renna  
Associate Administrator, UW Medical Center  
[rpamela@uw.edu](mailto:rpamela@uw.edu) | (206) 668-1700

### CONSTRUCTION ACTIVITIES

Construction in the emergency department entrance and lobby will be completed by the end of February. Odors from roofing may be present through the first two week of February, note that these odors are not harmful. Underground utilities will be installed across 120th st and the campus loop road through the month of February. Flaggers will be present while work is put in place and both lanes will be open during off-hours. The project is tracking towards completing the final façade finishes by June 2023. Interior framing, and overhead rough in of mechanical, electrical, plumbing, and other equipment is ongoing. When needed, crews may work on Saturdays between 9am and 6pm in accordance with the approved Construction Management Plan. We appreciate your patience with potential noise disturbance.

The photo below was taken on January 27th of the completed interior portion of the ED lobby.



### PROJECT OVERVIEW

The new Behavioral Health Teaching Facility will be a one-of-a-kind fully integrated welcoming and healing environment for individuals struggling with serious physical and behavioral health problems. The building will support a full continuum of clinical services ranging from effective medication management and psychotherapies to state-of-the art neuromodulation treatments, medical and surgical care for individuals with medical and behavioral health disorders. The building will also become the home for an interdisciplinary training and workforce development program that is focused on preparing and supporting the next generation of behavioral health providers for Washington State.

If you have any questions about the upcoming work at UWMC Northwest, please feel free to contact us and we would be glad to provide any additional information.